

~ 1 ~

## **Steam Shower Manual**

**Model: FJ-2243**



## **Important Safety Information**

### **IMPORTANT**

The following must be observed for safe and proper installation and operation. Professional installation is recommended; faulty electrical work may increase the risk of fire.

1. Always consult with a physician before using a steam shower.
2. Children should never use steam shower without adult supervision.
3. If you become dizzy, lightheaded or nauseas you should discontinue use immediately and consult a physician.

**WARNING:** Individuals who are intoxicated, or have been diagnosed with high blood pressure, or other heart problems should not use steam showers without prior medical consent.

## Table of Contents

Notice.....	4
Features.....	5
Water & Electrical Connections .....	5
Installation .....	6

**Notice**

- Do not disconnect any hose or joints from the acrylic panels.
- All shower panel seams must be sealed with 100% silicone caulk
- Remove all protective plastic before assembly
- Tighten and reseal any and all loose fittings, jets and fixtures.
- All electrical work should be done in accordance with local safety standards.
- Water lines must be active before unit is powered up.

### **Features**

- Luxurious Tempered Glass Enclosure
- Self-cleaning Steam Generator
- Left/Right Models Available
- Body Massage Jets
- Set of Mist Jets
- Rainfall Showerhead
- 2-Person Molded Seat
- Aromatherapy Cup
- Computer Panel
- Quartz Light
- Circulation Fan
- Diverter
- FM Radio / CD-MP3 connection
- Mirror
- Accessory Rack
- Foot Massage
- Handheld Showerhead

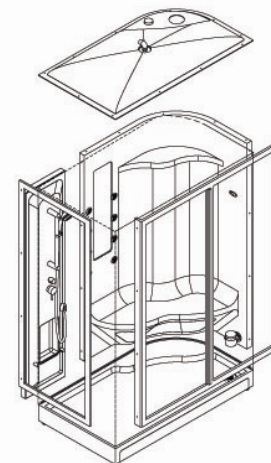
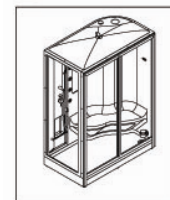
### **Water and Electrical Connections**

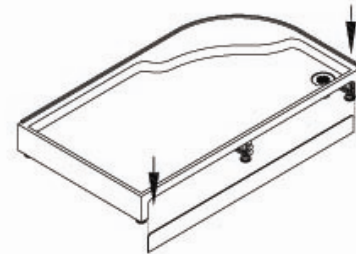
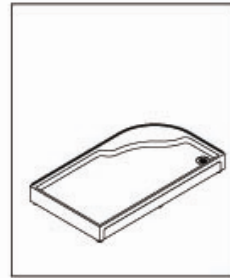
- To avoid scalding the incoming water temperature should never exceed 122° Fahrenheit.
- Water pressure must stay within the range of 30-70 PSI.
- 2 Hot/Cold shutoff valves with ½ male pipe threads are required (not included).
- 1-220 volt 20 amp GFCI breaker with internal neutral wire is required (10-2/ 12-2 gauge wire).

## Installation

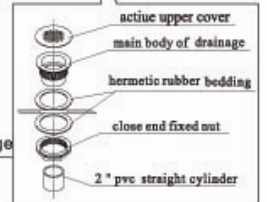
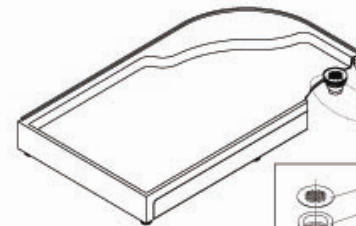
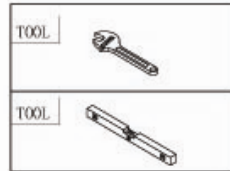
### Required tools

- Crescent wrench
- #2 Philips head screw-driver (electric if possible)
- Strait head screw-driver
- Level
- Caulk gun with 100% silicone caulk
- Customer support—call 866-STEAM-61
- **It is recommended to use 100% silicone caulk to seal all joints between shower panels instead of adhesive tape**

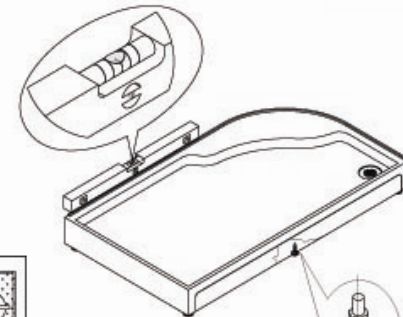




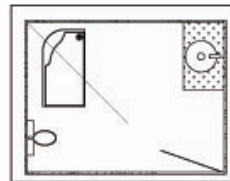
1. Take down the removal skirt.

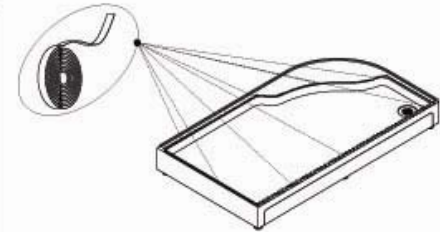
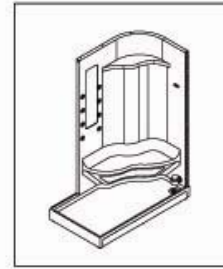


2. Prevent leakage



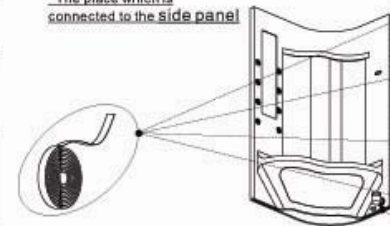
3. Adjust the lever of the base





The place which is connected to the side panel

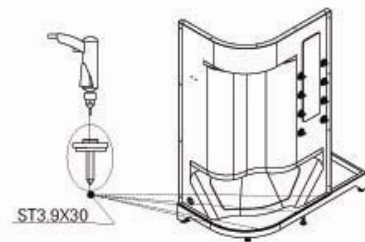
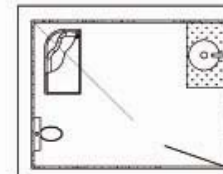
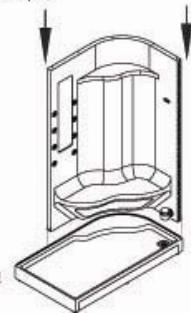
The place which is connected to the frame



The place which is connected to the base

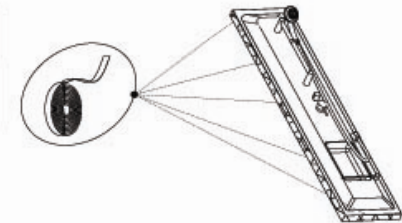
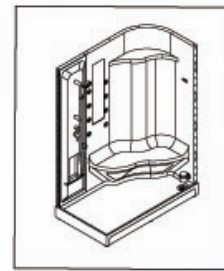
**1. Stick adhesive tape**

**2. Put to the right hole**

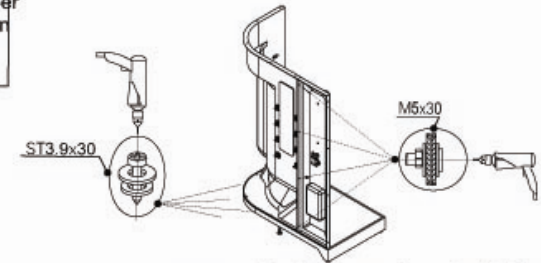
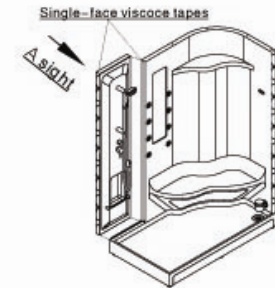


ST3.9X30

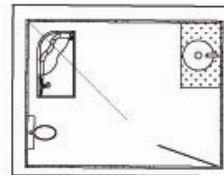
**3. Put to the right holes then screw the screws tight**

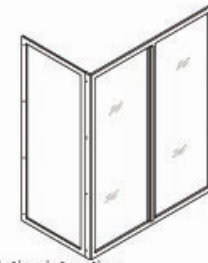
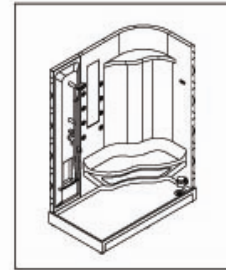


1. Stick adhesive tape

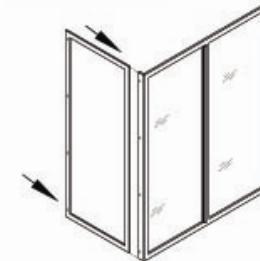
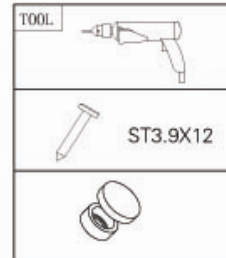


**A sight** 2. Installation requirement, put to the right holes. Screw the screws tightly

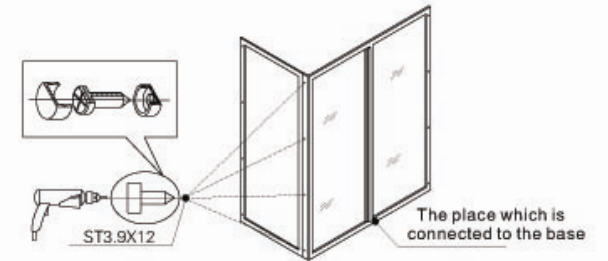




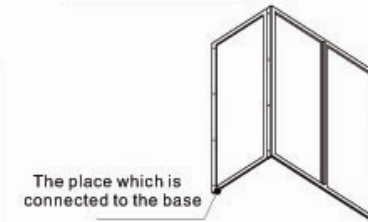
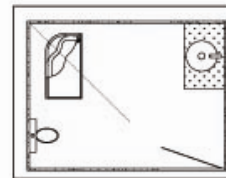
1. Installation instruction



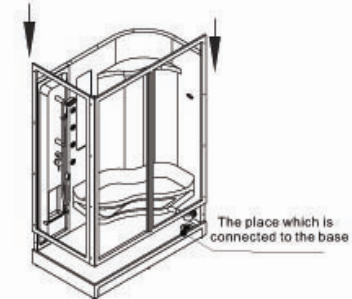
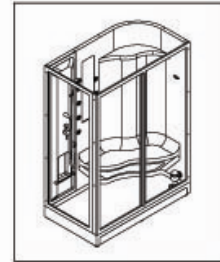
2. Installation requirement, put to the right holes.



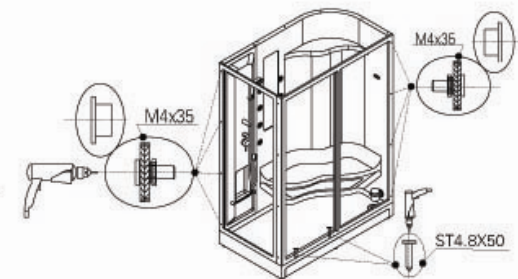
3. Screw the screws tightly.



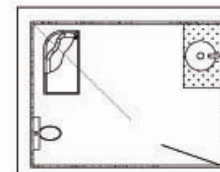
The place which is connected to the base



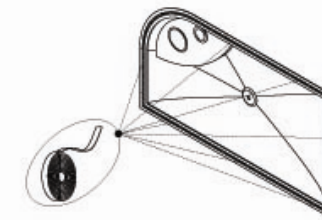
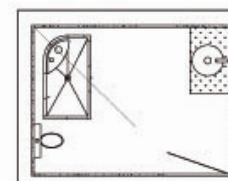
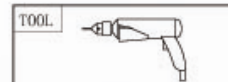
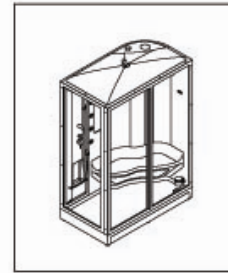
TOOL	
	ST 4.8X50
	M4 nut/rubber washer/plain washer/bolt M4X35



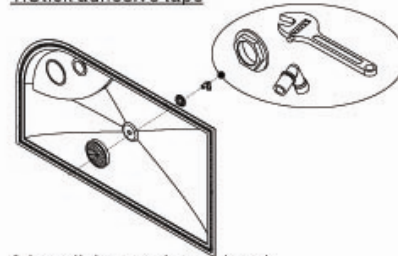
**1. Requirement: should be uprightness**



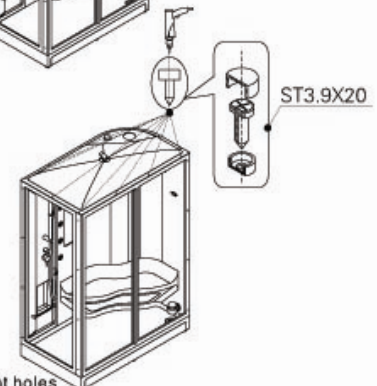
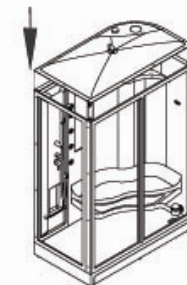
**2. Put to the right holes then screw the screws tight**



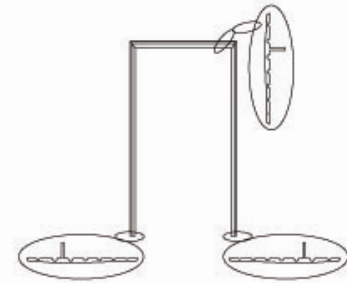
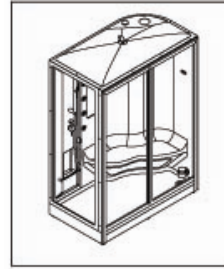
**1. Stick adhesive tape**



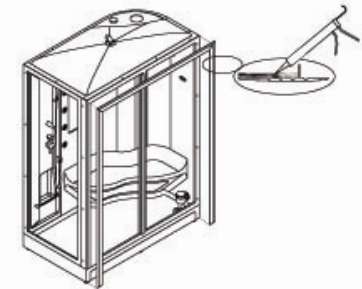
**2. Install the top shower head**



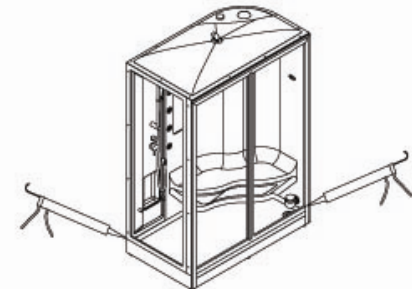
**3. Put to the right holes then screw the screws tight**



1. To install decorative belt



2. Silicon glue: should be fastness, good look and tidiness



⚠ 3. Silicon glue: prevent the leakage of the corner, should be fastness, good look and tidiness.

