

~ 1 ~

## **Steam Shower Manual**

**Model: FJ-2145**



## **Important Safety Information**

### **IMPORTANT**

The following must be observed for safe and proper installation and operation. Professional installation is recommended; faulty electrical work may increase the risk of fire.

1. Always consult with a physician before using a steam shower.
2. Children should never use steam shower without adult supervision.
3. If you become dizzy, lightheaded or nauseas you should discontinue use immediately and consult a physician.

**WARNING:** Individuals who are intoxicated, or have been diagnosed with high blood pressure, or other heart problems should not use steam showers without prior medical consent.

## Table of Contents

Notice.....	4
Features.....	5
Water & Electrical Connections .....	5
Installation .....	6

**Notice**

- Do not disconnect any hose or joints from the acrylic panels.
- All shower panel seams must be sealed with 100% silicone caulk
- Remove all protective plastic before assembly
- Tighten and reseal any and all loose fittings, jets and fixtures.
- All electrical work should be done in accordance with local safety standards.
- Water lines must be active before unit is powered up.

### **Features**

- Luxurious Tempered Glass Enclosure
- Self-cleaning Steam Generator
- Body Massage Jets
- Rainfall Showerhead
- 2-Person Molded Seat
- Aromatherapy Cup
- Computer Panel
- Quartz Light
- Circulation Fan
- FM Radio / CD-MP3 connection
- Phone
- Foot Massage
- Accessory Rack
- Mirror
- Handheld Showerhead

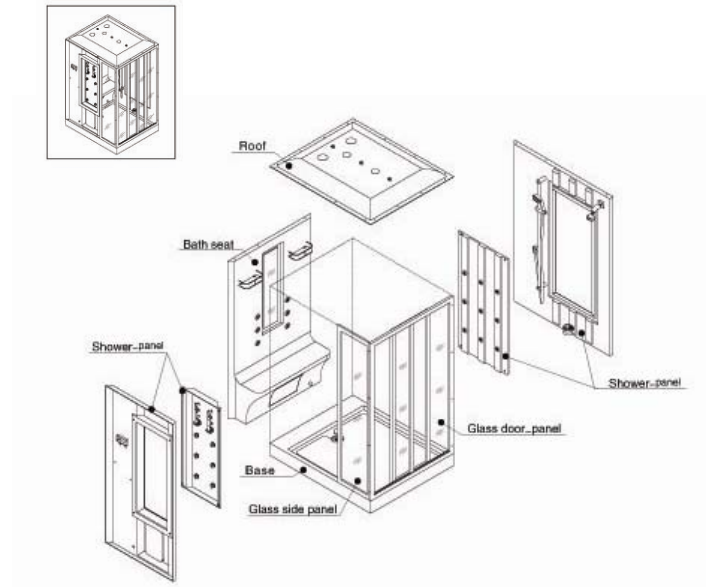
### **Water and Electrical Connections**

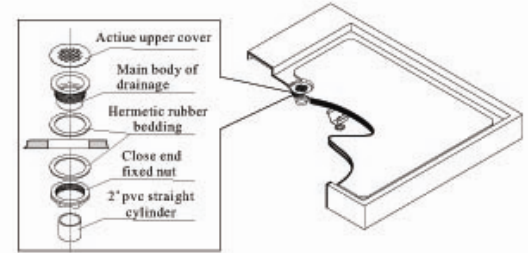
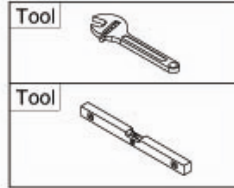
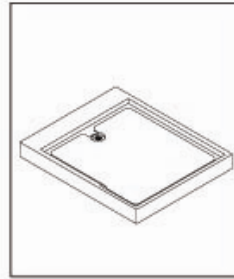
- To avoid scalding the incoming water temperature should never exceed 122° Fahrenheit.
- Water pressure must stay within the range of 30-70 PSI.
- 2 Hot/Cold shutoff valves with ½ male pipe threads are required (not included).
- 1-220 volt 20 amp GFCI breaker with internal neutral wire is required (10-2/ 12-2 gauge wire).

## Installation

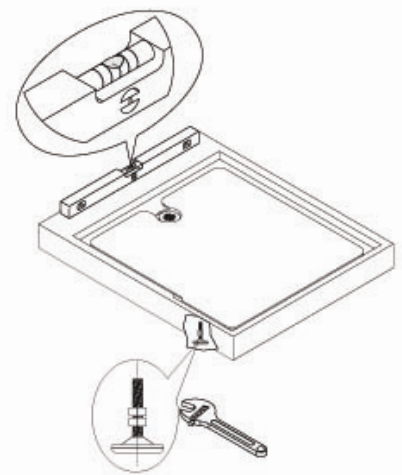
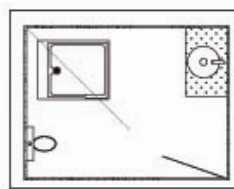
### Required tools

- Crescent wrench
- #2 Philips head screw-driver (electric if possible)
- Strait head screw-driver
- Level
- Caulk gun with 100% silicone caulk
- Customer support—call 866-STEAM-61
- **It is recommended to use 100% silicone caulk to seal all joints between shower panels instead of adhesive tape**

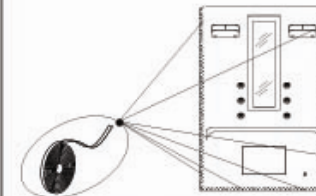
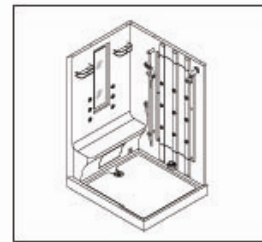




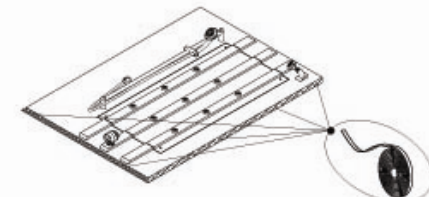
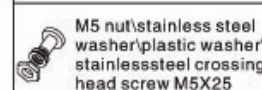
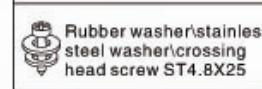
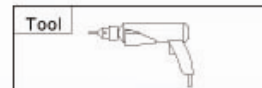
⚠ 1. Install the base, silicon glue to prevent the leakage.



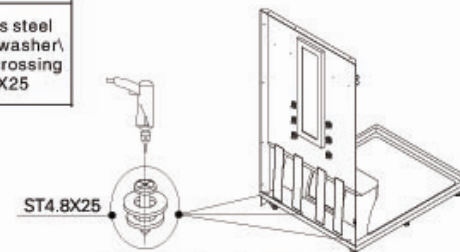
2. Adjust the lever of the base.



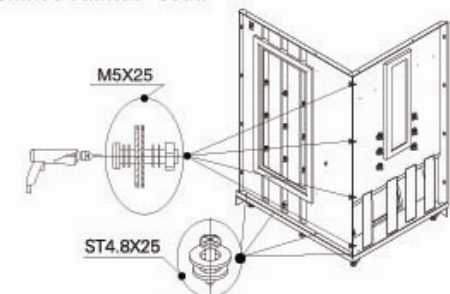
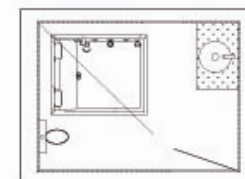
1. Base—the side of single adhesive tape.



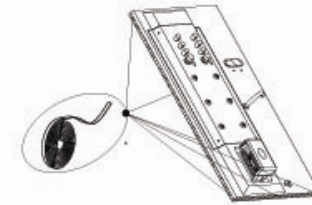
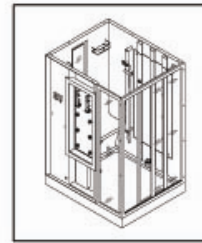
2. Base—the side of single adhesive tape.



3. fixed bathtub—seat.

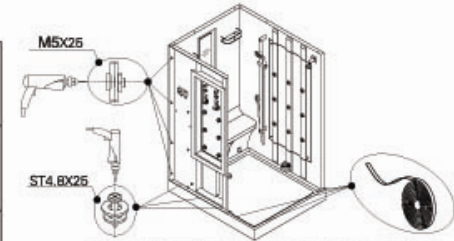


4. Connected to the side panel and bathtub—seat.

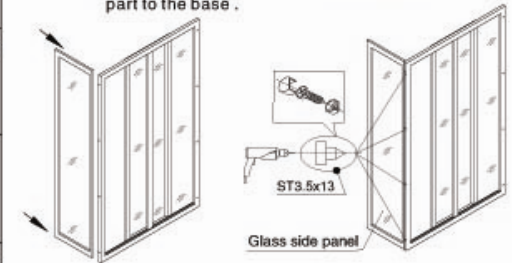


1. Base—the side of single adhesive tape.

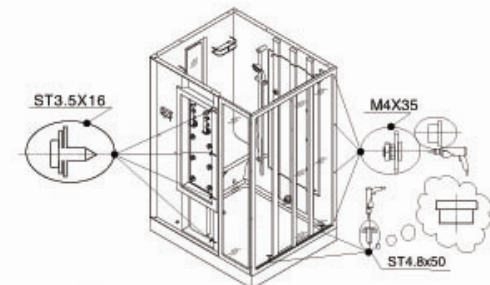
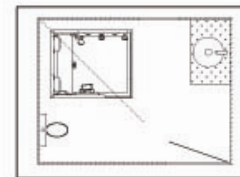
Tool	
	ST4.8X50
	ST3.5X13
	M4(M5)nut/stainless steel washer/plastic washer/stainless steel crossing head screw M4X35 (M5X25)
	Rubber washer/stainless steel washer/crossing head screw ST3.5X16 (ST4.8X25)



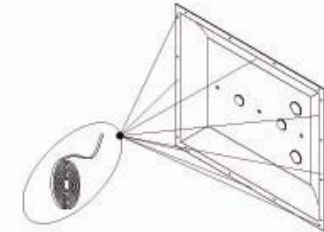
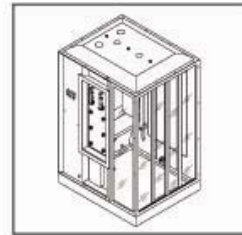
2. Stick the adhesive tape on the connective part to the base .



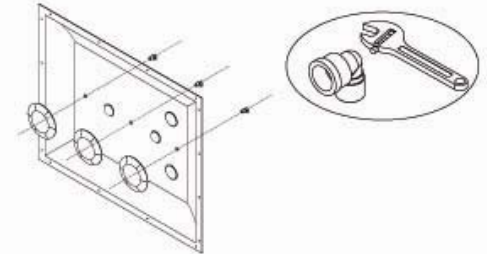
3.Connected to the glass side panel and door frame.



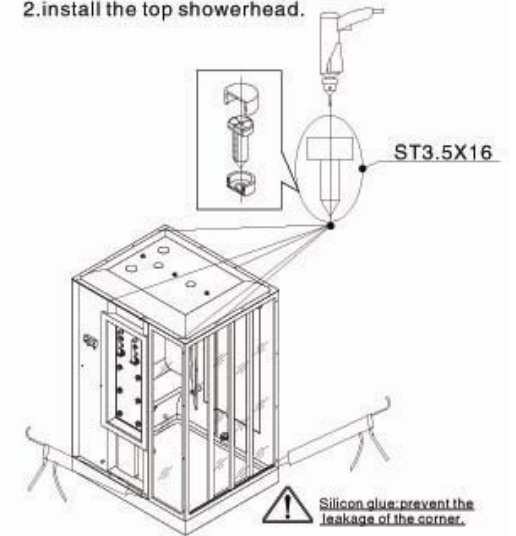
4.Put to the right holes then screw the screws tight.



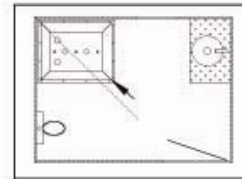
1. Stick the adhesive tape on the connective part to the top cap and side panel.



2. install the top showerhead.



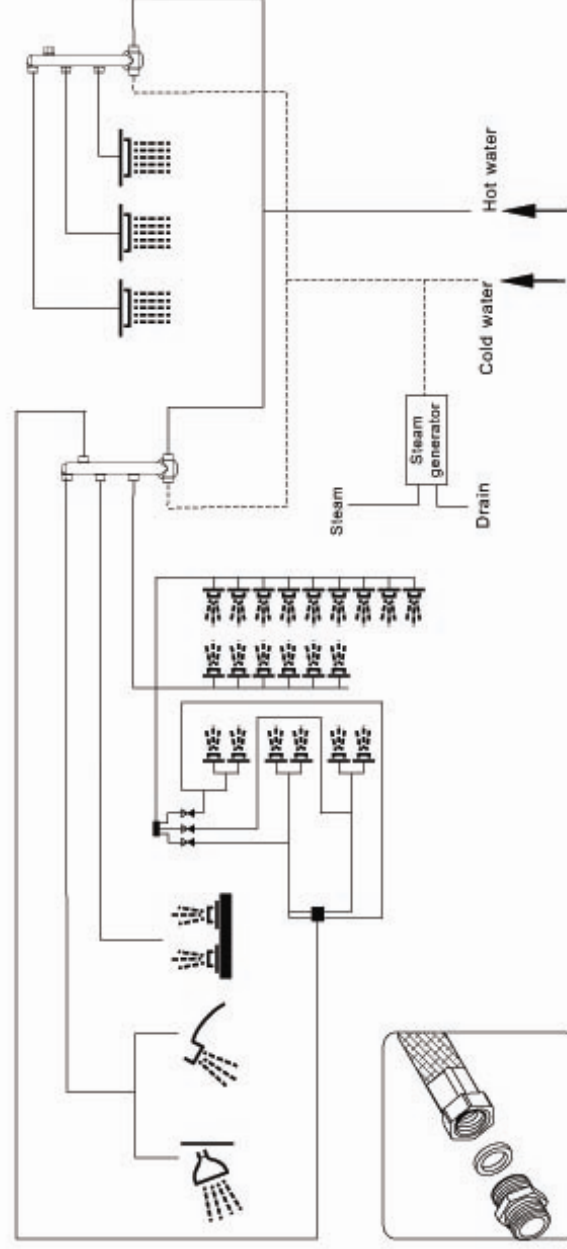
3. Put to the right holes then screw the screws tight.





## Microphones

After finishing the connection of panels of the shower room, you could install the microphones. please install the microphones to the right position according to the size. Then do not forget to use glue to fix it, but do not use the corrosive glue.



⚠ \*Before the connection all the pipe connectors should be used sealed washers.

## Water pipe illustration